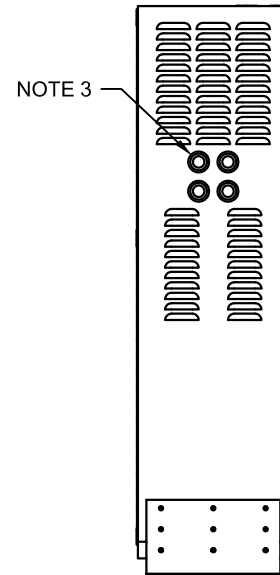
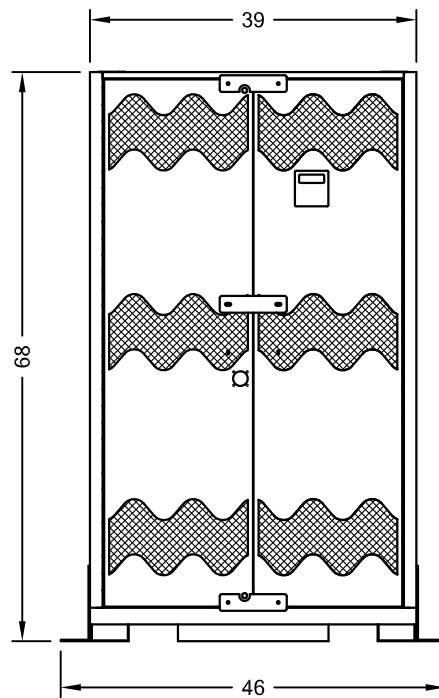
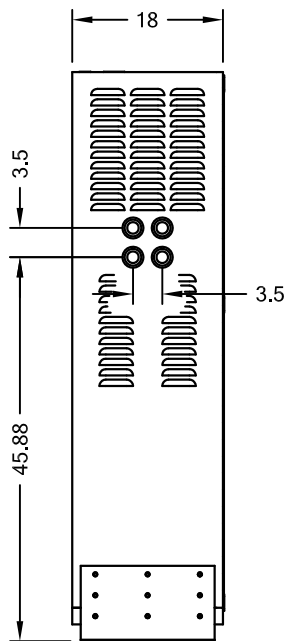
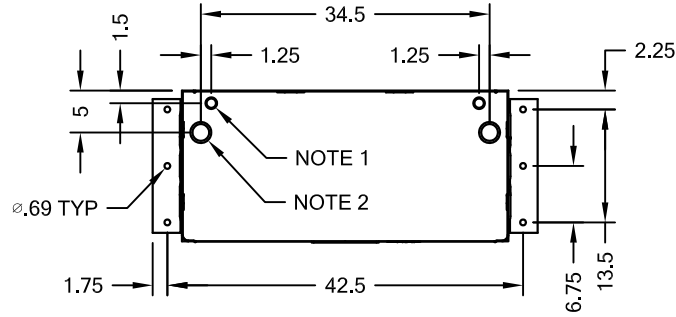


REV	ECO	DESCRIPTION	DATE	APPV'D
X1		PRELIMINARY	2/23/17	H.B.



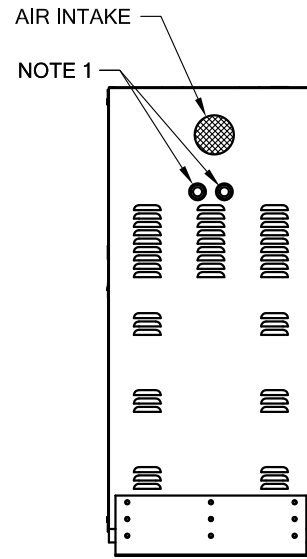
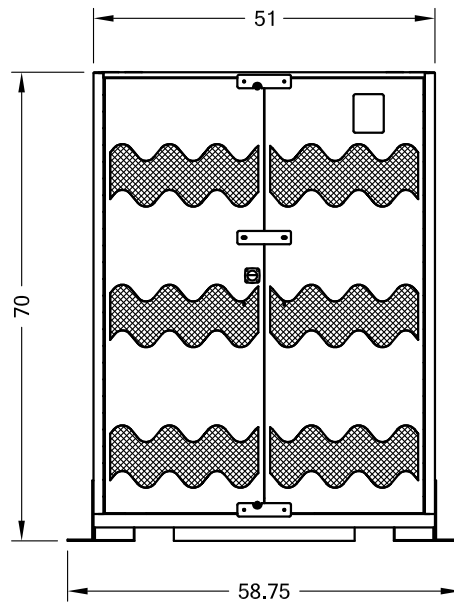
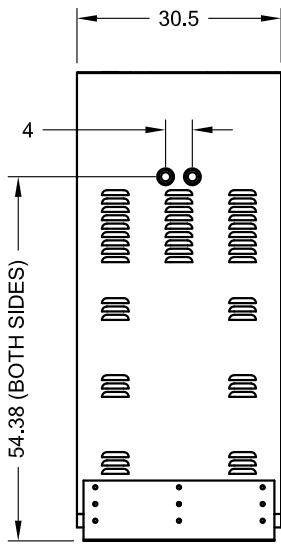
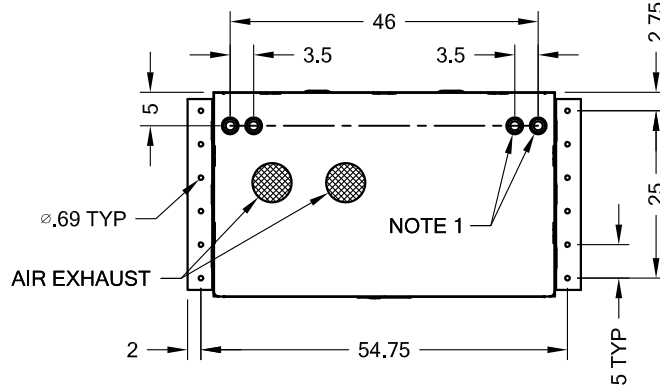
3KW THRU 8KW

NOTES:

- 1) DBL KNOCKOUT FOR 3/4" AND 1" CONDUIT.
- 2) DBL KNOCKOUT FOR 1.5" AND 2" CONDUIT.
- 3) TRIPLE KNOCKOUT FOR 1", 1.5" AND 2" CONDUIT.
- 4) CONSTRUCTION: INDOOR, OSHPD RATED.
- 5) FINISH: COLOR BLACK.
- 6) 7.5KW CAN BE IN 39" WIDE OR 51" WIDE CABINET DEPENDING ON THE BATTERY TYPE.

UNLESS OTHERWISE SPECIFIED, DIMENSIONS ARE IN INCHES. TOLERANCES ARE: DECIMALS FRACTIONS ANGLES .XX ± .03 ± 1/64 ± 1/2° .XXX ± .010		CRUCIAL POWER PRODUCTS LOS ANGELES, CA		
CADD: HAI NGUYEN 2/23/17		TITLE 1PH INVERTER, 90 MIN. OSHPD CERTIFIED		
CHKD: HAI NGUYEN 2/23/17	SIZE DWG	6001-380C		REV X1
APPVD: H. BAIK 2/23/27	SCALE:	EST. WT:	SHT 1 OF 1	
SPECIFICATIONS SUBJECT TO CHANGE WITHOUT NOTICE				

REVISION				
REV	ECO	DESCRIPTION	DATE	APPROVED
X1		PRELIMINARY	2/23/17	H.B.



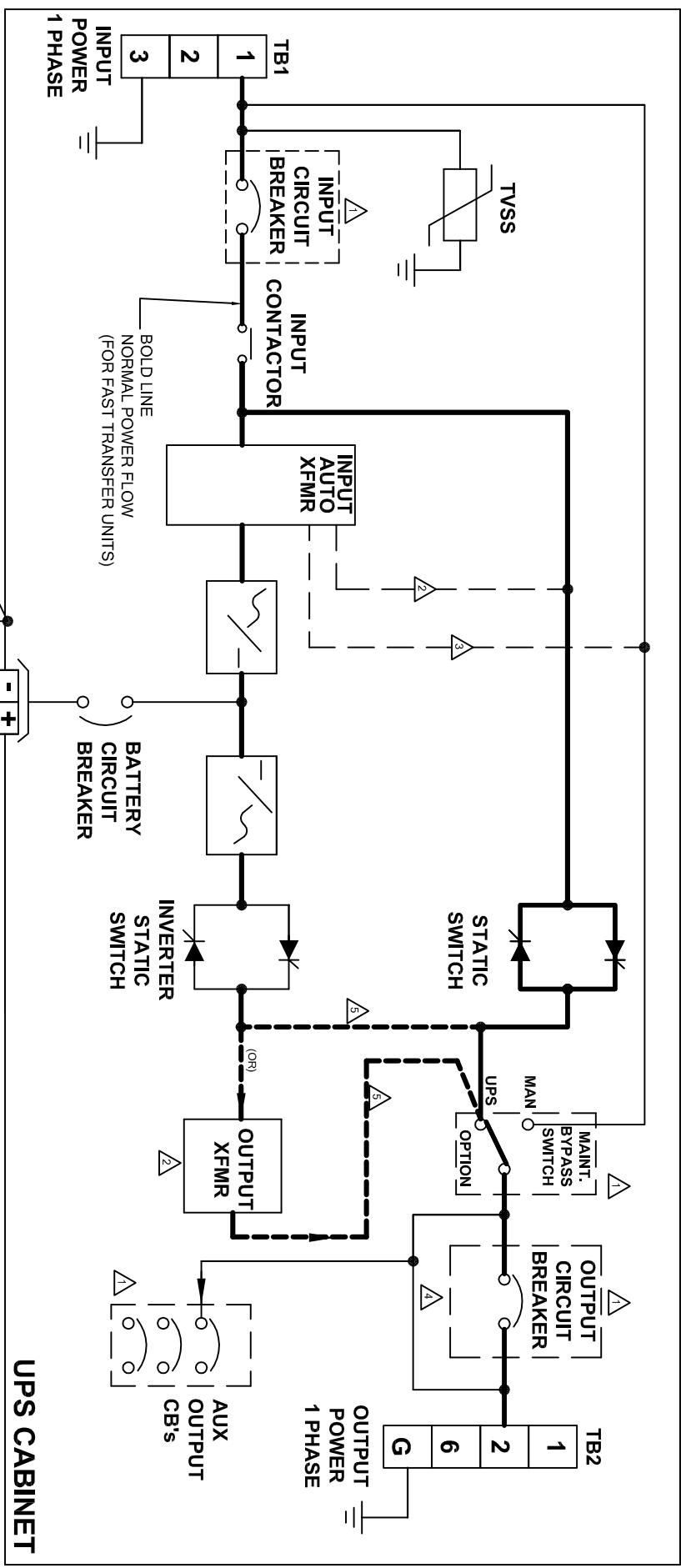
7.5KW, 10KW THRU 17KW

NOTES:

- 1) TRIPLE KNOCKOUT FOR 1", 1.5" AND 2" CONDUIT.
- 2) CONSTRUCTION: INDOOR, OSHPD RATED.
- 3) FINISH: COLOR BLACK.
- 4) 7.5KW CAN BE IN 39" WIDE OR 51" WIDE CABINET DEPENDING ON THE BATTERY TYPE.

UNLESS OTHERWISE SPECIFIED, DIMENSIONS ARE IN INCHES. TOLERANCES ARE: DECIMALS FRACTIONS ANGLES .XX ± .03 ± 1/64 ± 1/2° .XXX ± .010		CRUCIAL POWER PRODUCTS LOS ANGELES, CA	
CADD: HAI NGUYEN 2/23/27		TITLE 1PH INVERTER, 90 MIN. OSHPD CERTIFIED	
CHKD: HAI NGUYEN 2/23/17	SIZE DWG	6001-379C	REV X1
APPVD: H. BAIK 2/23/17	SCALE:	EST. WT:	SHT 1 OF 1
SPECIFICATIONS SUBJECT TO CHANGE WITHOUT NOTICE			

REVISION		DATE	APPROVED
REV	ECO		
A	8323	01/07/07	H.BAIK
B	9550	7/12/11	H.BAIK
C	9835	8/10/12	H.BAIK



- NOTES: (UNLESS OTHERWISE SPECIFIED)
- 1 ALL DOTTED LINE ARE OPTIONAL.
 - 2 USE FOR DIFFERENT INPUT/OUTPUT VOLTAGE UNITS.
 - 3 CONNECT THIS WAY FOR DIFFERENT INPUT/OUTPUT VOLTAGE UNITS.
 - 4 IN CASE OF OUTPUT CB / AUX OUTPUT CB BOTH USED, WIRES AUX CB'S TO MBS OUTPUT.
 - 5 FAST TRANSFER UNITS (INVERTER IS AT STAND-BY MODE WITH OR WITHOUT OUTPUT XFMR).

UNLESS OTHERWISE SPECIFIED,
DIMENSIONS ARE IN INCHES.
TOLERANCES ARE:
DECIMALS FRACTIONS ANGLES
.XX ±.03 ± 1/64 ± 1/2°
.XXX ±.010

CADD: S.SHAHSAVARI 10/12/10
CHKD: S.S. 10/12/10
APPVD: H.BAIK 10/12/10

CRUCIAL Power Products
COMMERCE, CA

TITLE
1Ø PHASE UPS, BLOCK DIAGRAM
STANDARD MODE/ FAST TRANSFER

SIZE DWG 6001-033-03C REV C
SCALE: EST. WT: SHT 1 OF 1

SPECIFICATIONS SUBJECT TO CHANGE WITHOUT NOTICE

SIDE
MOUNT
PROVISION

BACK
MOUNTING
PROVISION



TO UPS P100 TERMINAL BLOCK
SEE INSTALLATION
INSTRUCTION SHIPPED
WITH THE ASSEMBLY

USE
BUMPER
FOR
CONSOL
INSTALL

Remote Status Panel displays the following:

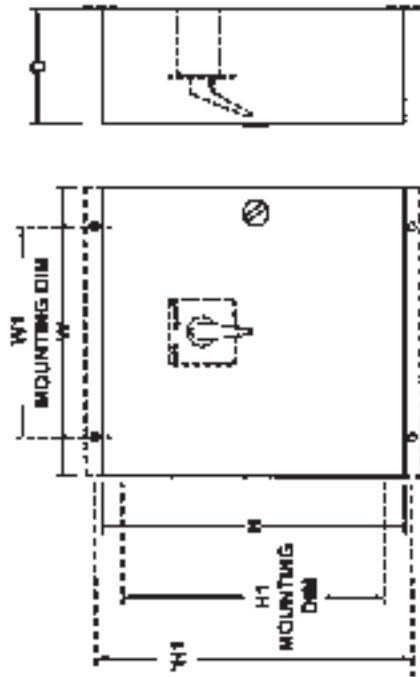
INPUT OK:	Input power is within acceptable range
INVERTER ON:	Inverter is on.
ON BYPASS:	Unit is on bypass mode.
ON BATT:	Unit is running from Battery.
LOW BATT:	Battery voltage is at low voltage before shutdown.
SUM ALARM:	Unit is on critical alarm such as: Over temperature, DC OV/UV.
HORN:	Audible warning for alarm condition.
SILENCE SWITCH:	Silences the audible warning.
LED TEST:	Tests the LED's by push in.



DISPLAY PANEL

REMOTE STATUS PANEL ASSEMBLY:
9100-1020-06: SINGLE PHASE
9100-1020-07: THREE PHASE

SINGLE PHASE MAKE BEFORE BREAK EXTERNAL WRAP AROUND BY-PASS SWITCH



PART NO.	AMP	ENCLOSURE SIZE "INCH"			
		W	H	D	H1
3000-044	55 AMP	14	16	8	*16.75
3000-045	110 AMP	14	16	10	*16.75

ENCLOSURE DIM'S

- 1) SWITCH CONTACTS ARE SINGLE PHASE L-NEUTRAL "MAKE BEFORE-BREAK".
- 2) CONTACTS MARKED "UPS" ARE CLOSED IN THE "UPS" POSITION.
- 3) CONTACTS MARKED "MAIN" ARE CLOSED IN THE "MAIN" POSITION.
- 4) WRAP AROUND BY-PASS SWITCH SHOULD BE USED WITH SAME INPUT VOLTAGE.
- 5) WRAP AROUND BY-PASS SWITCH CAN ONLY BE USED WITHOUT ANY BUILT IN SECONDARY DISTRIBUTION CIRCUIT BREAKERS IN UPS.

Gpp Crucial Power Products

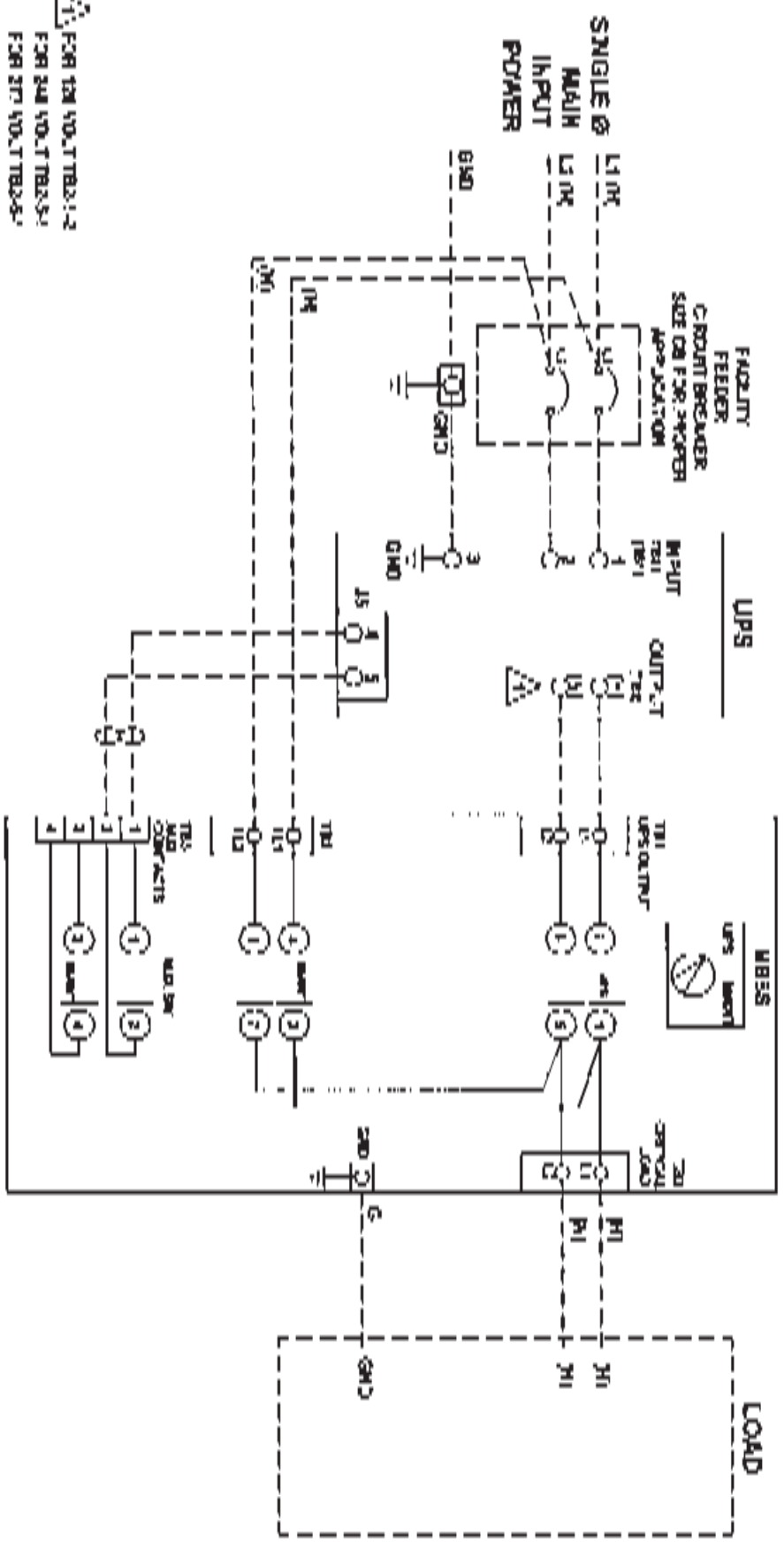
ENCLOSURE: _____
 1. APPROVED AS SUPPLYING: _____

SINGLE PHASE (SELECTION CHART)
 EXTERNAL WRAP AROUND
 BY-PASS PANEL SCAMP-110 AMP

REV. C1

DATE: 04/04/04 BY: 04/04/04

SINGLE PHASE MAKE BEFORE BREAK EXTERNAL WRAP AROUND BY-PASS SWITCH



FOR 120VOLT TRAYS
FOR 240 VOLT TRAYS
FOR 277 VOLT TRAYS
SIZING NOT USED

WARNING POWER TO BOTH POLS. NO SINGLE PHASE BOND
INTERNAL CABLE:
SUA: 864WV12241
120V: 864WV12241
277V: 864WV12241

DATE: _____
DRAWING NO: _____
BY: _____

gp CRUCIAL POWER PRODUCTS

SINGLE PHASE MAKE BEFORE BREAK EXTERNAL WRAP AROUND BY-PASS SWITCH 864WV-11241

6801-333-4145

REV: 1