

GMS

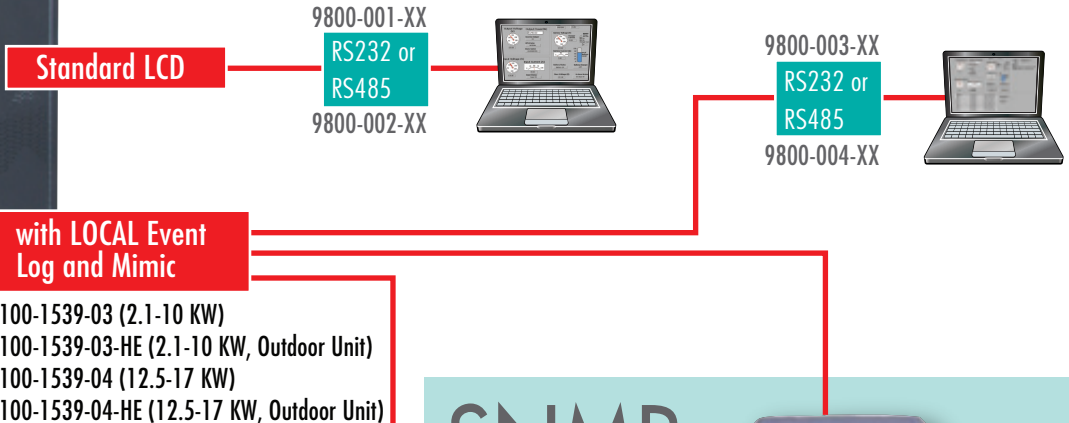
Global Monitoring System

for Single Phase Battery Backup Systems & Central Lighting Inverters

The most advanced Local/Remote Monitor,
Data/Event Logging via SNMP, Wire or Wireless
(status monitoring, email, text messaging, and system report)



Inverter

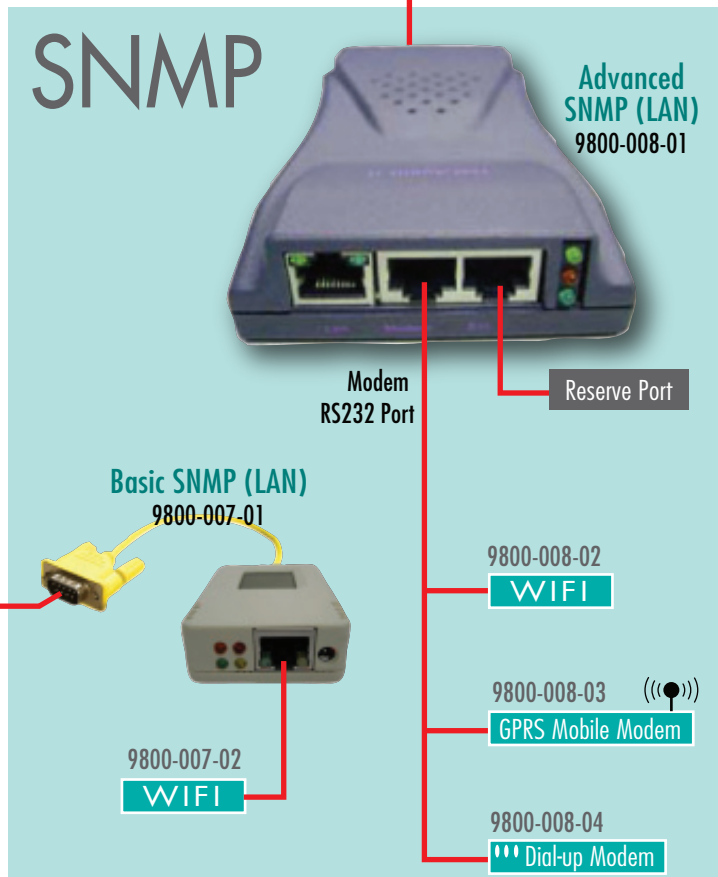


with LOCAL Event Log and Mimic
9100-1539-03 (2.1-10 KW)
9100-1539-03-HE (2.1-10 KW, Outdoor Unit)
9100-1539-04 (12.5-17 KW)
9100-1539-04-HE (12.5-17 KW, Outdoor Unit)

FEATURES:

- Provide SNMP to monitor UPS status & Event Log
- Auto-sense 10M/100M Fast Ethernet
- Manage & configure via Telnet, Web Browser or NMS
- Support TCP/IP, UDP, SNMP, Telnet, SNTP, PPP, HTTP, SMTP Protocol
- Emails capable of SNMP TRAP for events notification.
- Auto email status report daily (configurable)
- Basic SNMP (LAN) with WIFI
- Advance SNMP (LAN) with WIFI, Dial-up Modem, or GPRS Modem

SNMP



GMS

Global Monitoring System

Crucial Powers Global Monitoring System keeps you informed 24 hours a day from a distance (email, text message, report) to prevent Costly Problems of your power system.

PC Interface RS232 (9800-001-XX) or RS485 (9800-002-XX)

PC Interface, status, metering and display 10ft. standard (optional length)

Event Logging:

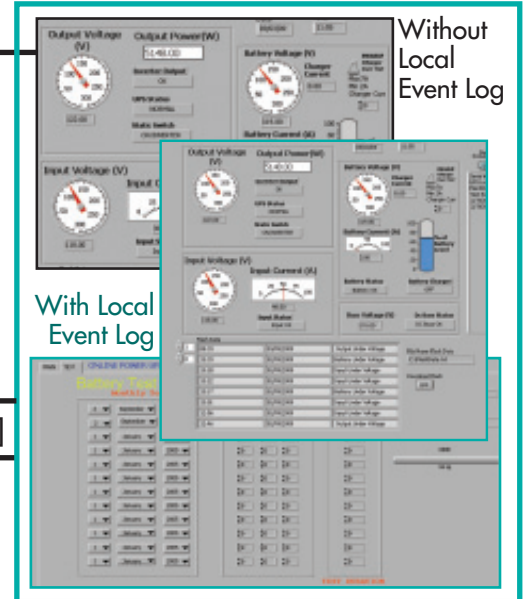
Yearly Customer Programmable Battery Test Schedule and Text Report
Event Log: 100 events, 12 programmable battery exerciser test and Battery exerciser test log (via local PC only)

Local on Unit LCD with Event Log and Mimic

9100-1539-03 (2.1 to 10 kW), 9100-1539-04 (12.5 to 17 kW), "-HE" for Outdoor

PC Interface RS232(9800-003-XX) or RS485(9800-004-XX) [10ft. Std.]

Status	Reports (100 view/downloadable event log)
Input Voltage	Input: Freq., Voltage, OV, UV,
Output Power, Output Voltage	Output: OV, UV, Overload, Bypass, Aux, CB Trip
Battery Voltage, Battery Current	Battery: OV, UV, Charger Off
Battery Charging/Discharging	Inverter: Fault, Rect OV (DC Buss), Rect UV, Temp

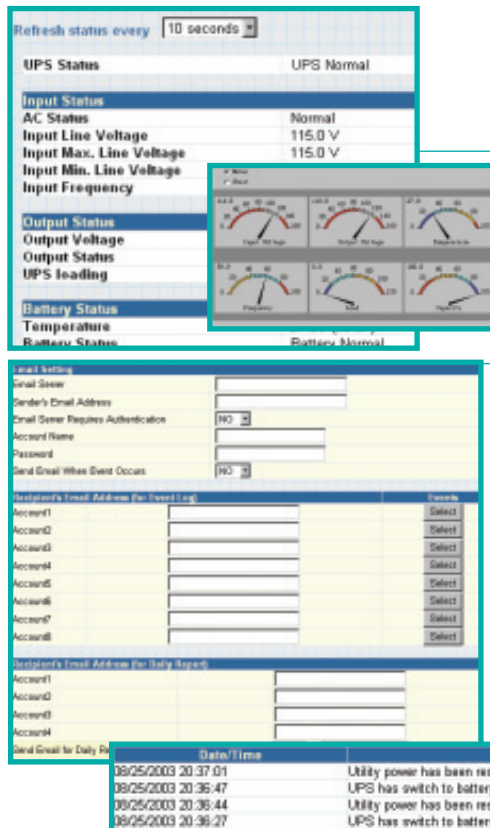


SNMP with Local Event Log

Current Status (UPS Status)	Input Status: AC Status, Input Line Volt, Input Max Line Volt, Input Min. Line Volt, Input Frequency Output Status: Output Volt, Output Status, UPS load Battery Status: Temperature, Battery Status, Battery Capacity, Battery Voltage, Time on Battery	
Meter/Chart (Graphic Type)	Input Volt, Output Volt, Temperature, Frequency, Load, Capacity	
SNMP	Basic NetAgent	Advanced NetAgent
Log Info:		
Event Log	500 logs	1000 logs
SMS Log	N/A	with GPRS unlimited
Data Log	1000 logs	1000 logs
Notification:		
Email	8 email address	8 email address
SMS	N/A	GPRS (8 Phone Numbers)
Communication:		
LAN	9800-007-01	9800-008-01
WIFI	9800-007-02	9800-008-02
GPRS	N/A	9800-008-03
Dial-up Modem	N/A	9800-008-04

GPRS: General Packet Radio Service
LAN: Local Area Network
MIB: Management Information Base
NMS: Network Management System

SMS: Short Message Service
SNMP: Simple Network Management Protocol
WIFI: IEEE 802.11 standards



Screen Menu

Information

- System Status
- Basic Information
- Current Status
- Meter/Chart

Configuration

- UPS Configuration
- Network
- SNMP
- Email
- SMS
- WEB/Telnet
- System Time
- Language

Log Information

- Event Log
- SMS Log
- Save Data Log
- Data Log

Help About

Specifications are subject to change without prior notifications.

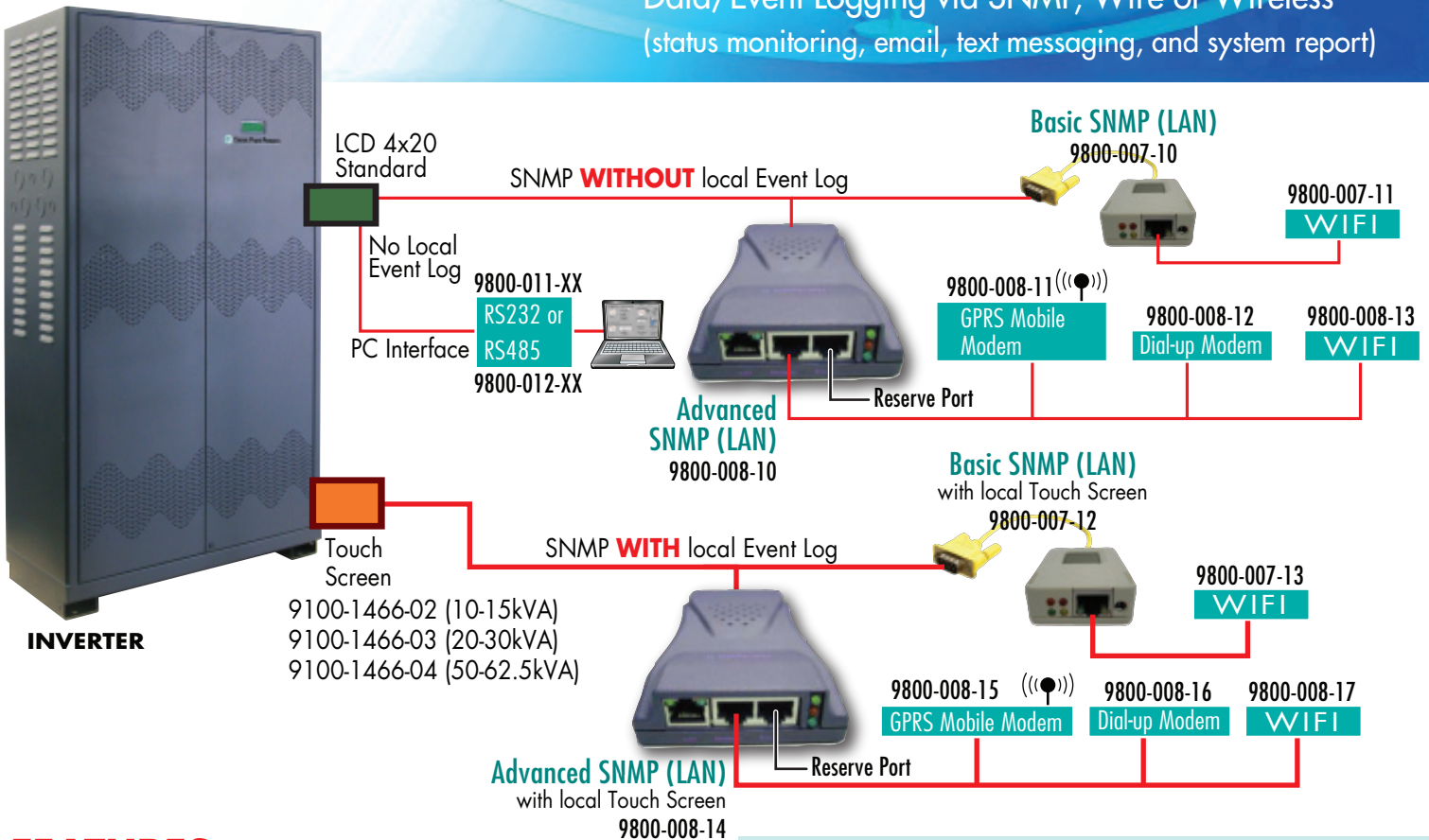


GMS

Global Monitoring System

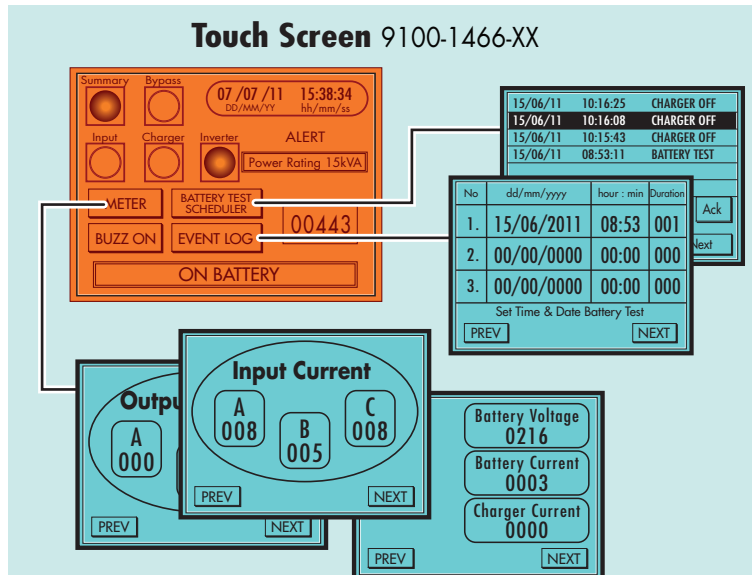
for Three Phase Battery Backup Systems & Central Lighting Inverters

The most advanced Local/Remote Monitor,
Data/Event Logging via SNMP, Wire or Wireless
(status monitoring, email, text messaging, and system report)



FEATURES:

- Auto-sense 10/100M Fast Ethernet
- Provide SNMP MIB to monitor & log UPS status
- Manage & configure via Telnet, Web Browser or NMS
- Support TCP/IP, UDP, SNMP, Telnet, SNTP, PPP, HTTP, SMTP Protocol
- Sending both of SNMP TRAP and E-mail for events notification.
- Auto email daily Battery Backup history report (configurable)
- Basic SNMP (LAN) with WIFI
- Advanced SNMP (LAN) with GPRS, Modem, or WIFI



GMS

Global Monitoring System

Crucial Powers Global Monitoring System keeps you informed 24 hours a day from a distance (email, text message, report) to prevent Costly Problems of your power system.

Screen Menu

Information

- System Status **A**
- Basic Information **B**
- Current Status **B**
- Meter/Chart **C**

Configuration

- UPS Configuration
- Network
- SNMP
- Email **D**
- SMS
- WEB/Telnet
- System Time
- Language

Log Information

- Event Log **E**
- SMS Log
- Data Log **F**
- Save Data Log

- Help
- About

PC Interface without Touch screen and local Event Log

RS232(9800-011-XX) or **RS485**(9800-012-XX)

PC interface, status, metering and display 10ft. standard (optional length)

Event Logging:

Yearly Customer Programmable Battery Test Schedule and Text Report

Event Log: 100 events, 12 programmable battery exerciser test and Battery exerciser test log

SNMP with local touch screen

Current Status (UPS Status)	Input Status: AC Status, Input Line Volt, Input Max Line Volt, Input Min. Line Volt, Input Frequency Output Status: Output Volt, Output Status, UPS load Battery Status: Temperature, Battery Status, Battery Capacity, Battery Voltage, Time on Battery			
Meter/Chart (Graphic Type)	Input Volt, Output Volt, Temperature, Frequency, Load, Capacity			
	Basic SNMP (LAN)		Advanced SNMP (LAN)	
Log Info:				
Event Log	500 logs		1000 logs	
SMS Log	N/A		with GPRS unlimited	
Data Log	1000 logs		1000 logs	
Notification:				
Email	8 email address		8 email address	
SMS	N/A		GPRS (8 Phone No)	
Communication:	w/o local Event Log	with local Event Log	w/o local Event Log	with local Event Log
LAN	9800-007-10	9800-007-12	9800-008-10	9800-008-14
WIFI	9800-007-11	9800-007-13	9800-008-13	9800-008-17
GPRS	N/A	N/A	9800-008-11	9800-008-15
Dial-up	N/A	N/A	9800-008-12	9800-008-16

Sample Screens

System Status System Information **A**
Network Status

Current Status Input Status **B**
(UPS Status) Output Status
Battery Status

Meter/Chart **C**
Input Volt, Output Volt, Temperature, Frequency, Load, Capacity

Notification: **D**
Email: Up to 8 email addresses

Log Info: **E**
Event Log: up to 1000 logs

F
Data Log: up to 500 logs

- GPRS: General Packet Radio Service
- LAN: Local Area Network
- MB: Management Information Base
- NMS: Network Mgmt. System
- SMS: Short Message Service
- SNMP: Simple Network Management Protocol
- WIFI: IEEE 802.11 std.

Specifications are subject to change without prior notifications.



14000 S. Broadway, Los Angeles, CA 90061
Tel: (800) 244-4069, Fax: (800) 246-2346