

# GMS

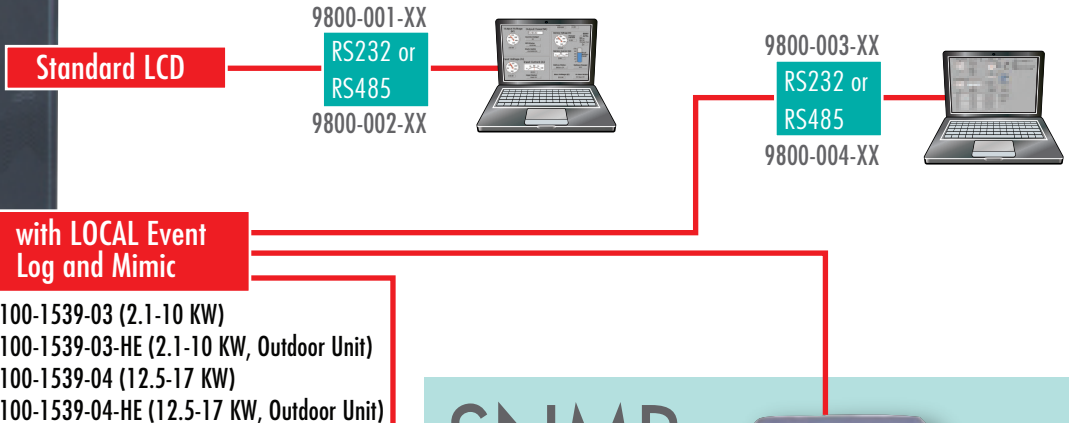
## Global Monitoring System

for Single Phase Battery Backup Systems & Central Lighting Inverters

The most advanced Local/Remote Monitor,  
Data/Event Logging via SNMP, Wire or Wireless  
(status monitoring, email, text messaging, and system report)

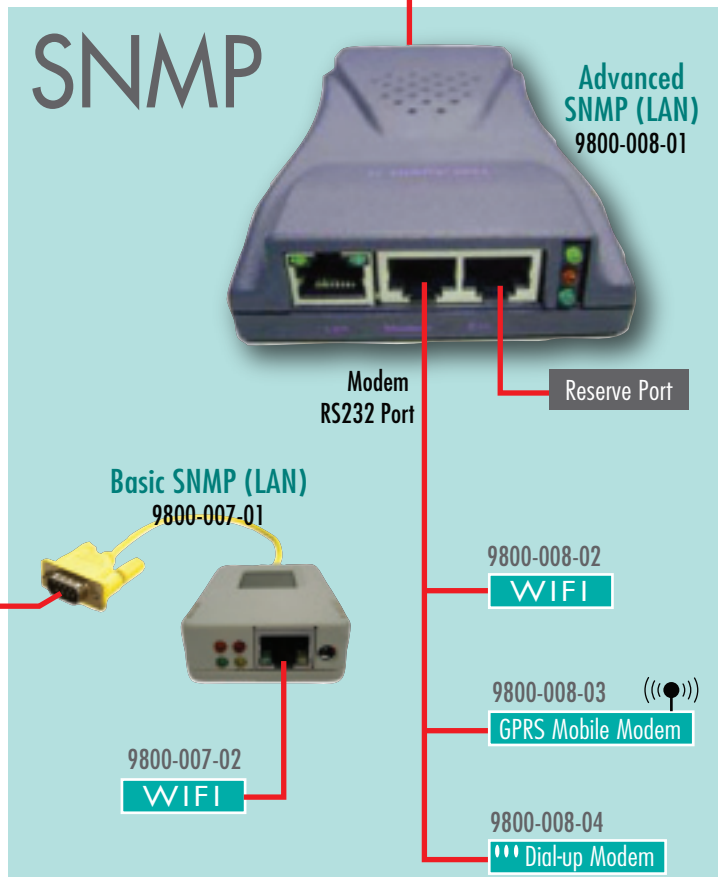


Inverter



**with LOCAL Event Log and Mimic**  
9100-1539-03 (2.1-10 KW)  
9100-1539-03-HE (2.1-10 KW, Outdoor Unit)  
9100-1539-04 (12.5-17 KW)  
9100-1539-04-HE (12.5-17 KW, Outdoor Unit)

### SNMP



### FEATURES:

- Provide SNMP to monitor UPS status & Event Log
- Auto-sense 10M/100M Fast Ethernet
- Manage & configure via Telnet, Web Browser or NMS
- Support TCP/IP, UDP, SNMP, Telnet, SNTP, PPP, HTTP, SMTP Protocol
- Emails capable of SNMP TRAP for events notification.
- Auto email status report daily (configurable)
- Basic SNMP (LAN) with WIFI
- Advance SNMP (LAN) with WIFI, Dial-up Modem, or GPRS Modem

# GMS

## Global Monitoring System

Crucial Powers Global Monitoring System keeps you informed 24 hours a day from a distance (email, text message, report) to prevent Costly Problems of your power system.

### PC Interface RS232 (9800-001-XX) or RS485 (9800-002-XX)

PC Interface, status, metering and display 10ft. standard (optional length)

### Event Logging:

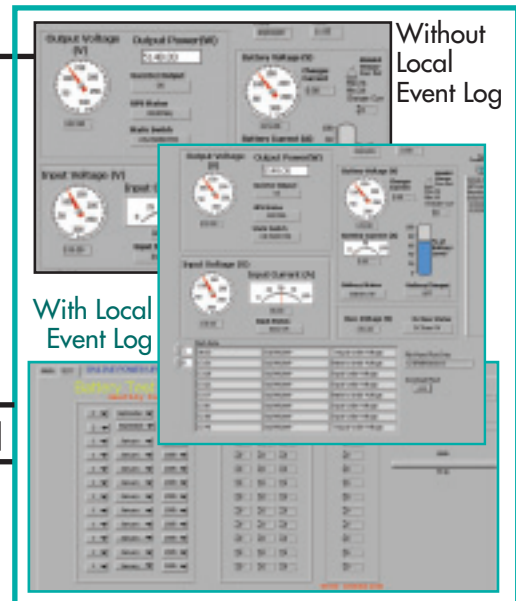
Yearly Customer Programmable Battery Test Schedule and Text Report  
Event Log: 100 events, 12 programmable battery exerciser test and Battery exerciser test log (via local PC only)

### Local on Unit LCD with Event Log and Mimic

9100-1539-03 (2.1 to 10 kW), 9100-1539-04 (12.5 to 17 kW), "-HE" for Outdoor

### PC Interface RS232(9800-003-XX) or RS485(9800-004-XX) [10ft. Std.]

Status	Reports (100 view/downloadable event log)
Input Voltage	Input: Freq., Voltage, OV, UV,
Output Power, Output Voltage	Output: OV, UV, Overload, Bypass, Aux, CB Trip
Battery Voltage, Battery Current	Battery: OV, UV, Charger Off
Battery Charging/Discharging	Inverter: Fault, Rect OV (DC Buss), Rect UV, Temp

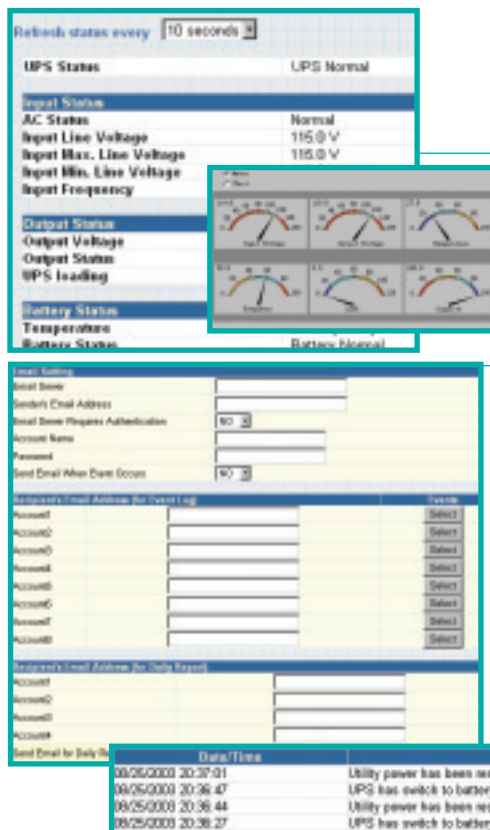


### SNMP with Local Event Log

<b>Current Status</b> (UPS Status)	<b>Input Status:</b> AC Status, Input Line Volt, Input Max Line Volt, Input Min. Line Volt, Input Frequency <b>Output Status:</b> Output Volt, Output Status, UPS load <b>Battery Status:</b> Temperature, Battery Status, Battery Capacity, Battery Voltage, Time on Battery	
<b>Meter/Chart</b> (Graphic Type)	Input Volt, Output Volt, Temperature, Frequency, Load, Capacity	
<b>SNMP</b>	<b>Basic NetAgent</b>	<b>Advanced NetAgent</b>
<b>Log Info:</b>		
Event Log	500 logs	1000 logs
SMS Log	N/A	with GPRS unlimited
Data Log	1000 logs	1000 logs
<b>Notification:</b>		
Email	8 email address	8 email address
SMS	N/A	GPRS (8 Phone Numbers)
<b>Communication:</b>		
LAN	9800-007-01	9800-008-01
WIFI	9800-007-02	9800-008-02
GPRS	N/A	9800-008-03
Dial-up Modem	N/A	9800-008-04

GPRS: General Packet Radio Service  
LAN: Local Area Network  
MIB: Management Information Base  
NMS: Network Management System

SMS: Short Message Service  
SNMP: Simple Network Management Protocol  
WIFI: IEEE 802.11 standards



### Screen Menu

#### Information

- System Status
- Basic Information
- Current Status
- Meter/Chart

#### Configuration

- UPS Configuration
- Network
- SNMP
- Email
- SMS
- WEB/Telnet
- System Time
- Language

#### Log Information

- Event Log
- SMS Log
- Save Data Log
- Data Log

**Help**  
About

Specifications are subject to change without prior notifications.

